

# SIEMENS

## S45/ME45 Modem

Tips and tricks on using your Siemens mobile

<b>Installation for Microsoft Windows 95/98 .....</b>	<b>2</b>
<b>Installation for Microsoft Windows NT .....</b>	<b>11</b>
<b>Installation for Microsoft Windows 2000 .....</b>	<b>21</b>

# Installation for Microsoft Windows 95/98

---

Modem installation .....	3
APN and QoS setup.....	3
Dial-up networking .....	5

# Installation for Microsoft Windows 95/98

Two settings are required to use the S45 to surf the net via GPRS using your mobile:

- 1) Modem installation
- 2) Dial-up networking

Before entering the settings, connect your S45 to the COM port of your computer. Activate GPRS on your S45 (**Menu|Settings|Data exchange|GPRS**).

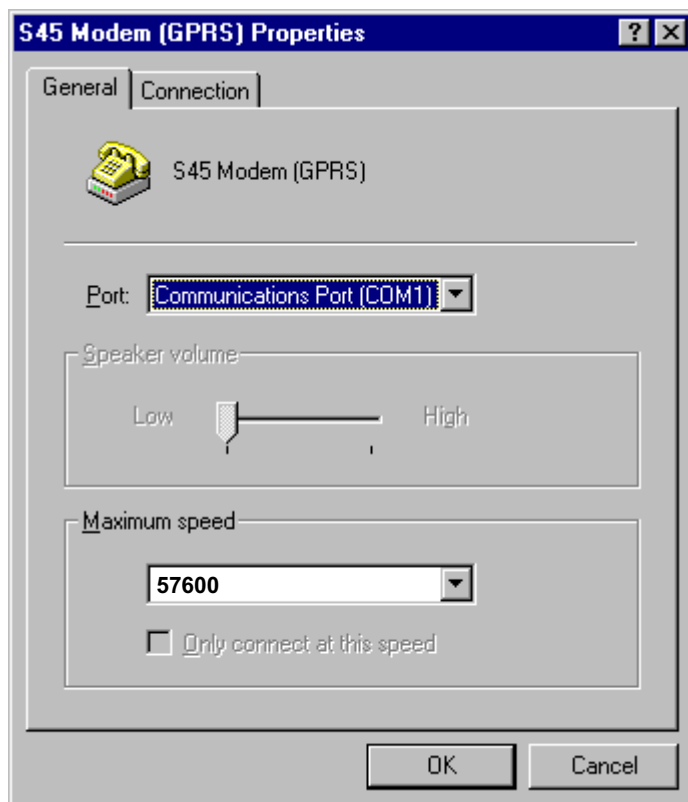
## Modem installation

- Insert the CD-ROM into the CD drive on your PC.
- Under **Start|Settings|Control Panel**, click on the **Modems** icon and select **Add**.
- Select **Don't detect my modem; I will select it from a list** and click on **Next**.
- Select **Software\GPRS\s45modem.inf** on the CD-ROM and under models select **S45 Modem (GPRS)**. Then click on **Next**.
- Select the appropriate COM port and click on **Next**.
- Click on **Finish**.
- Click on **Close**.

## APN and QoS setup

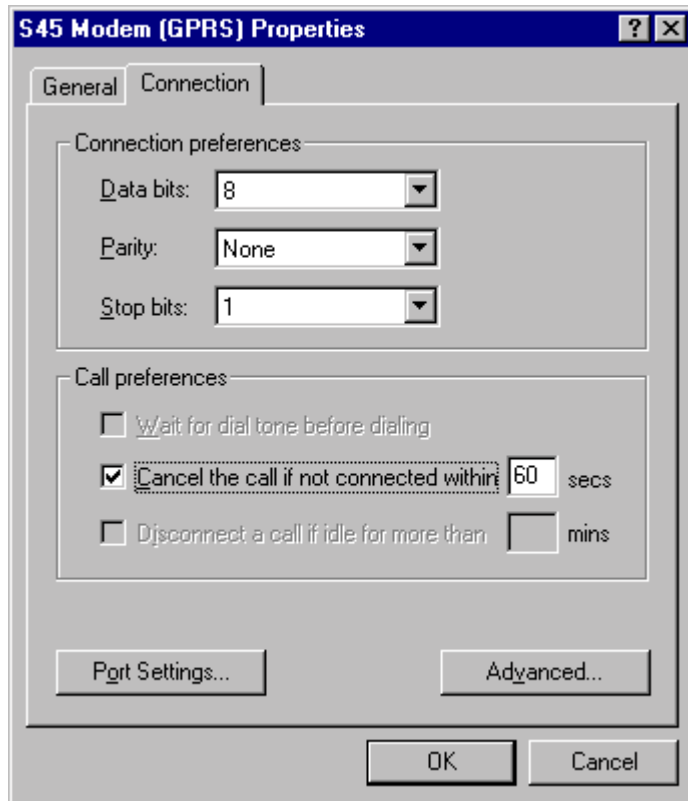
APN (**A**ccess **P**oint **N**ame) and QoS (**Q**uality of **S**ervice) are set via an AT command.

Under **Start|Settings|Control Panel**, click on the **Modems** icon. Select the S45 GPRS modem and click on **Properties**:

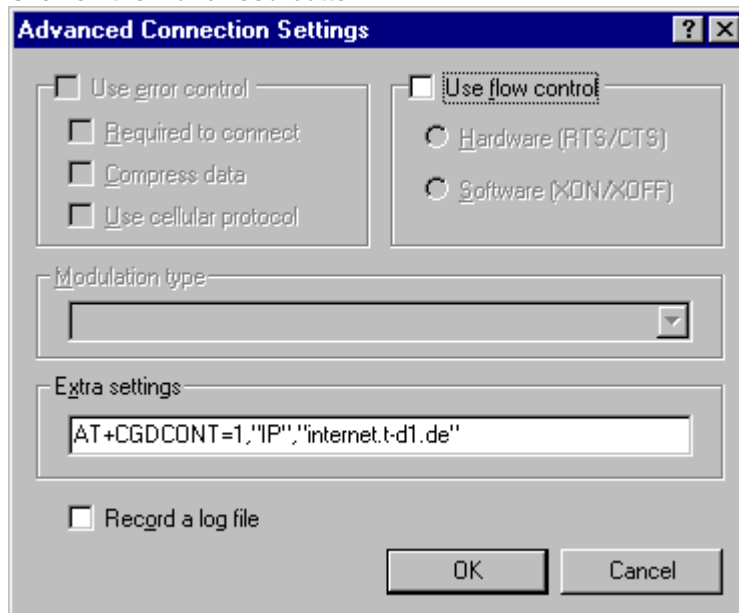


## Installation for Microsoft Windows 95/98

Select the **Connection** tab.



Click on the **Advanced** button.



Enter the relevant AT command into the "**Extra settings**" field (here the settings for D1). The settings for your network operator are detailed in the file: [Software\GPRS\NetParameters.Pdf](#)

Click on **OK**.

# Installation for Microsoft Windows 95/98

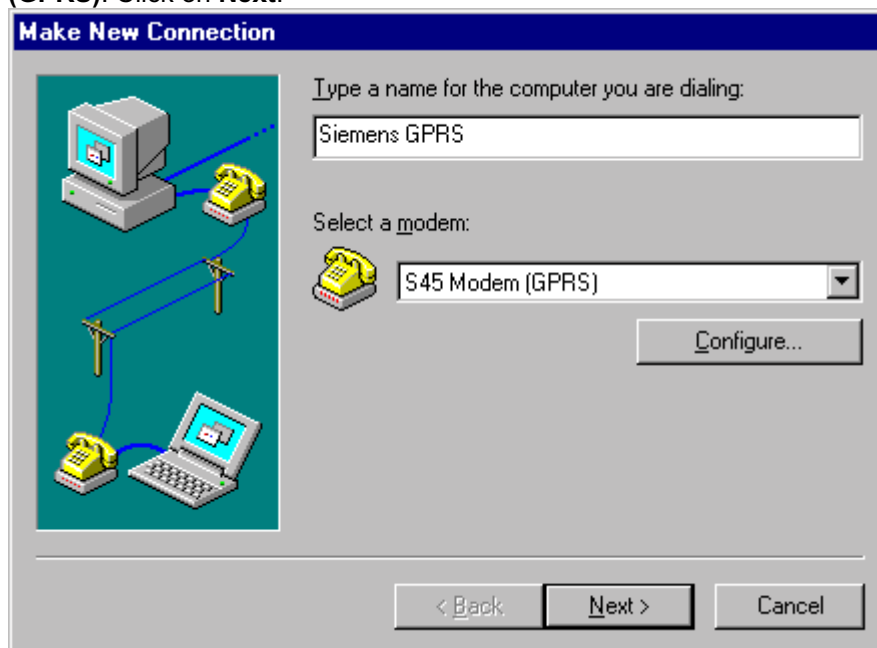
## Dial-up networking

From **Start|Programs|Accessories** select **Dial-Up Networking**.

Double click on **"Make New Connection"**:

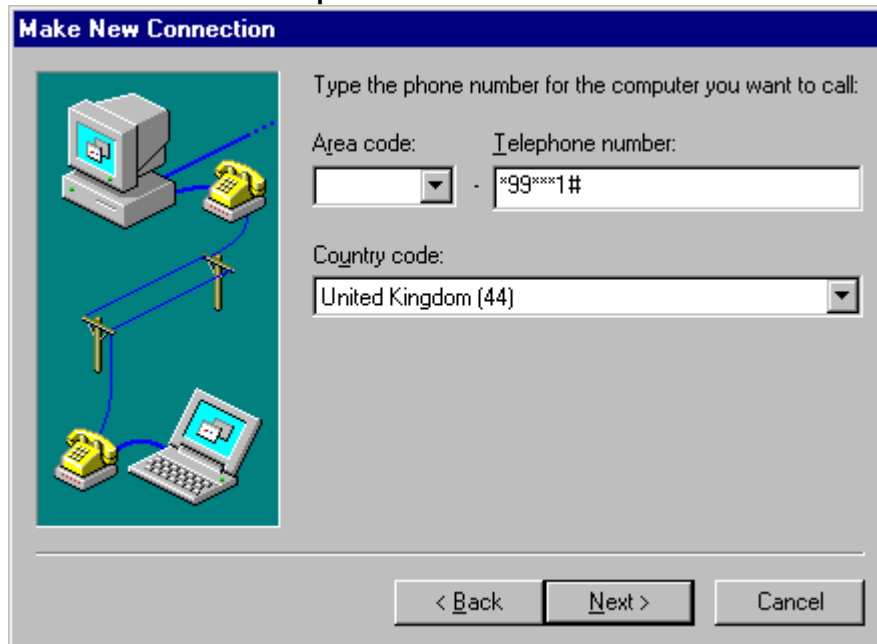


Give your "New Connection" a name (e.g. **Siemens GPRS**). As the modem, select **S45 Modem (GPRS)**. Click on **Next**.



## Installation for Microsoft Windows 95/98

Enter \*99\*\*\*1# under Telephone number. Click on Next.



Make New Connection

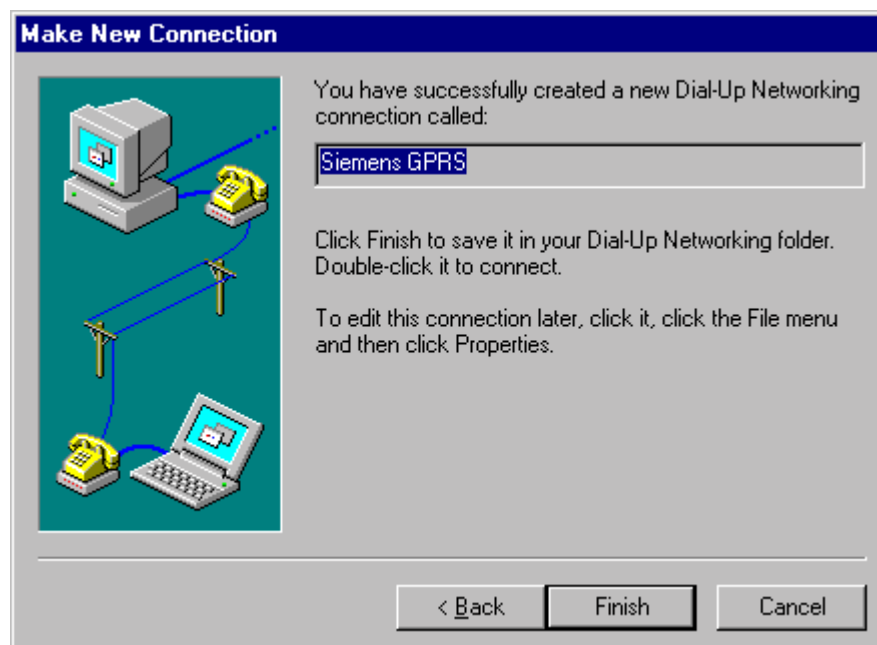
Type the phone number for the computer you want to call:

Area code:  Telephone number:

Country code:

< Back Next > Cancel

Click on Finish.



Make New Connection

You have successfully created a new Dial-Up Networking connection called:

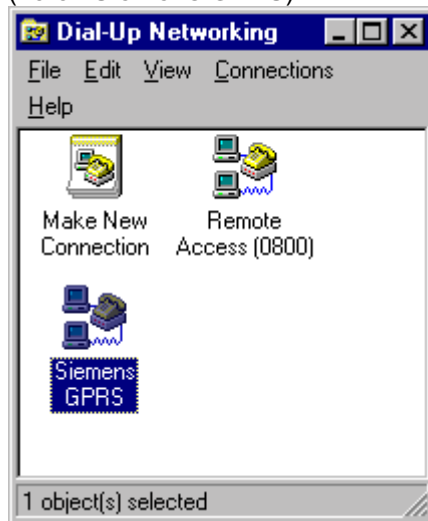
Click Finish to save it in your Dial-Up Networking folder. Double-click it to connect.

To edit this connection later, click it, click the File menu and then click Properties.

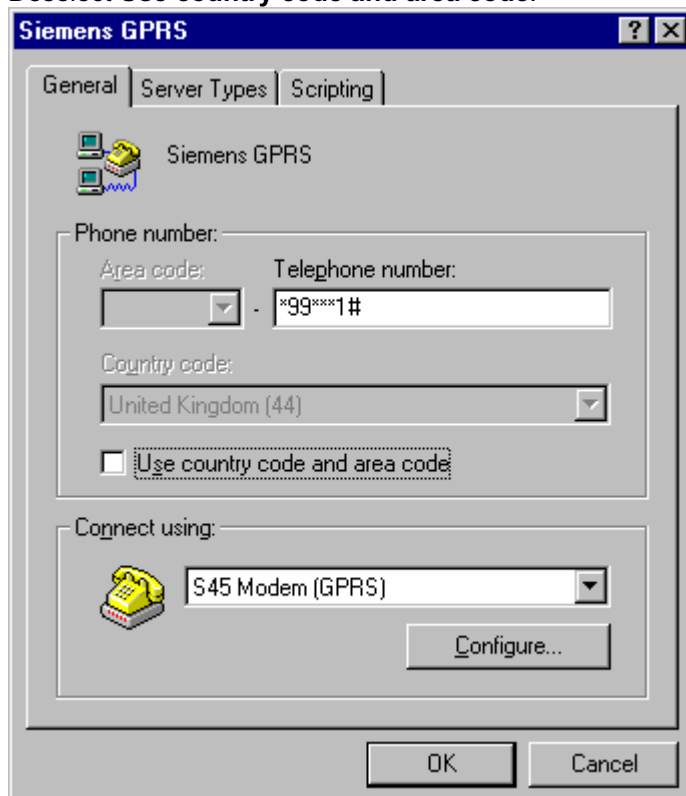
< Back Finish Cancel

## Installation for Microsoft Windows 95/98

Under **Dial-Up Networking** there is a new icon with the name that you assigned to the connection (here: **Siemens GPRS**):



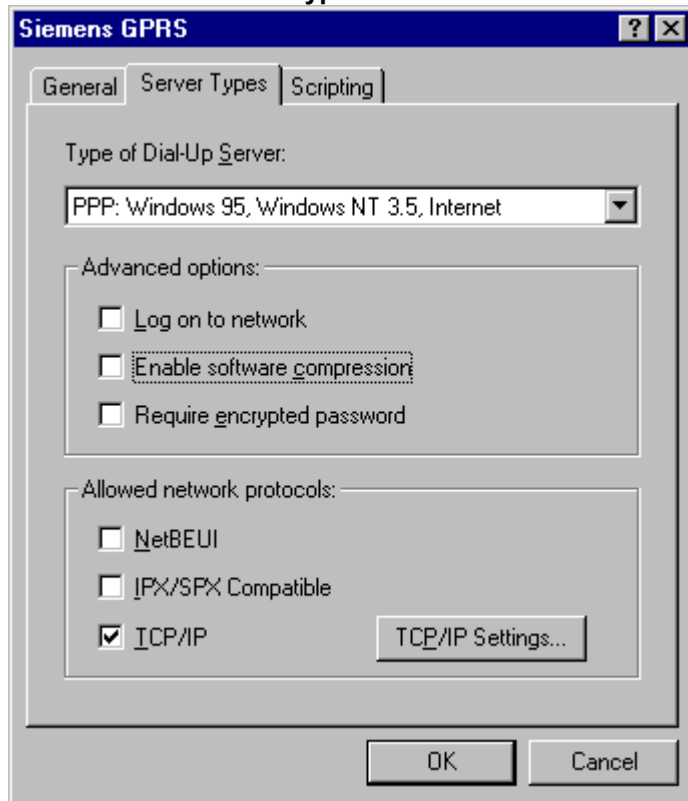
Click on the new icon using the **right-hand mouse button** and select **Properties**. Deselect **Use country code and area code**.



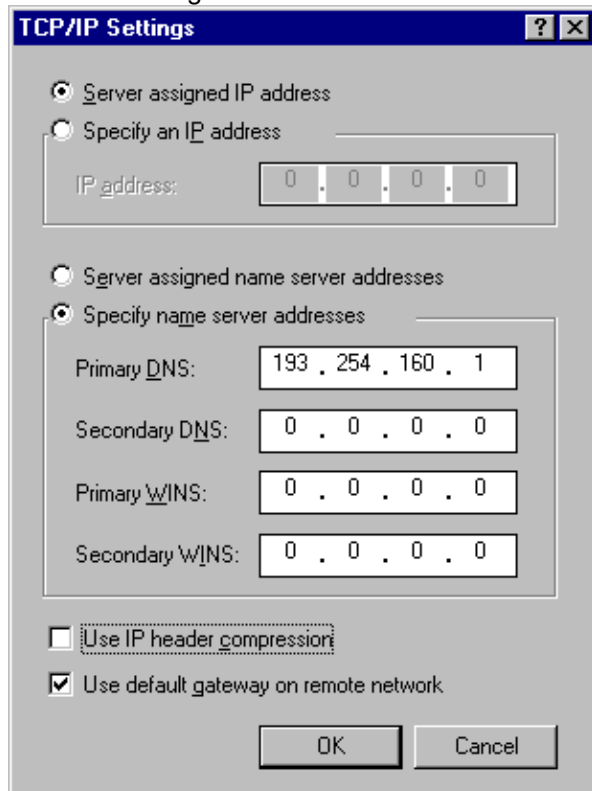
Click on **Configure...**

## Installation for Microsoft Windows 95/98

Then select the **Server Types** tab.



Enter the settings as shown and then click on **TCP/IP Settings**.





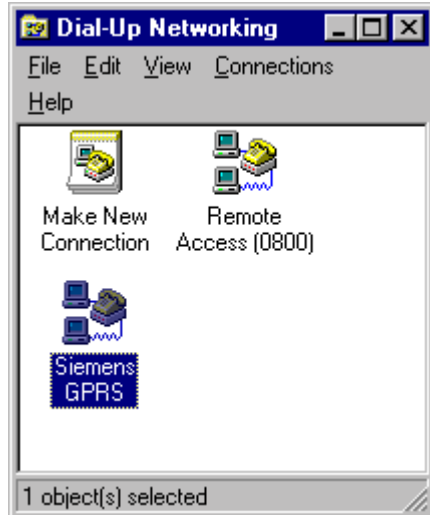
## Installation for Microsoft Windows 95/98

Enter the network-specific settings (here D1).

The settings for your network operator can be found in the file [Software\GPRS\NetParameters.Pdf](#) . If not, please contact your network operator.

Click on **OK|OK**.

Double click on **Siemens GPRS** to open the connection:



Click on **Connect**.

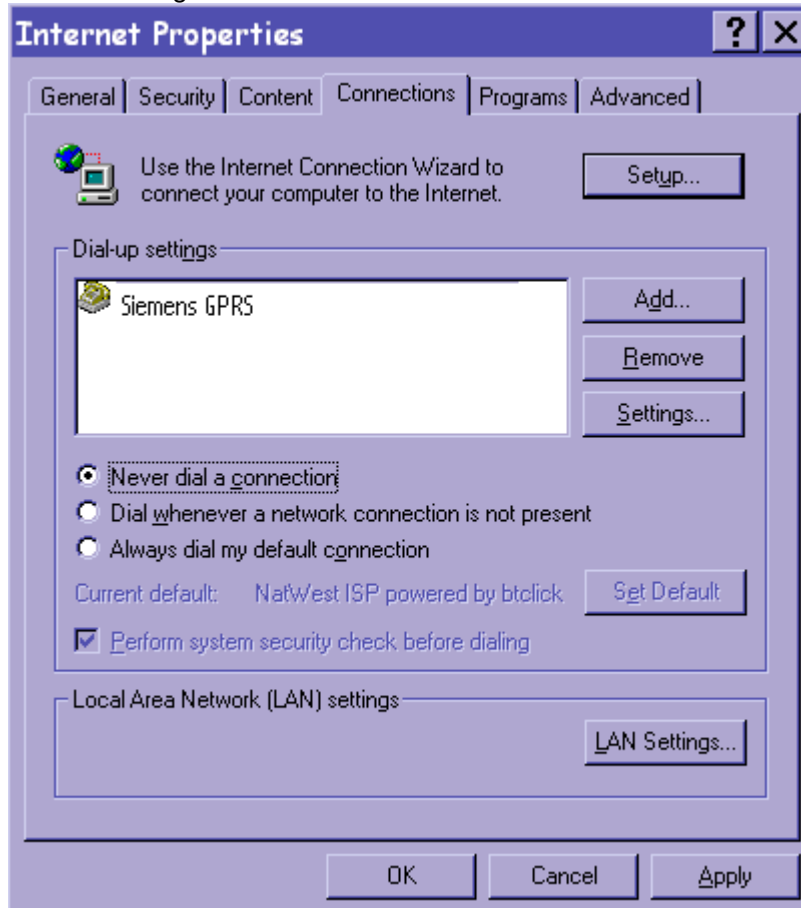


## Installation for Microsoft Windows 95/98

---

You can now, for example, open your browser to surf the internet.

Make sure that the browser is set up to use the current connection. With Microsoft Internet Explorer, these settings are under **View|Internet Options|Connections**. Select **Siemens GPRS** as the dial-up network setting:



Additional information on your Siemens mobile is available at [www.my-siemens.com](http://www.my-siemens.com).

# Installation for Microsoft Windows NT

---

Modem installation .....	12
RAS setup.....	12
APN and QoS setup.....	13
Dial-up networking .....	15

# Installation for Microsoft Windows NT

---

Three settings are required to use the S45 to surf the net via GPRS using your mobile:

- 1) Modem installation
- 2) Dial-up networking

Before entering the settings, connect your S45 to the COM port of your computer. Activate GPRS on your S45 (**Menu|Settings|Data exchange|GPRS**).

## Modem installation

- Insert the CD-ROM into the CD drive on your PC.
- Click on **Start|Settings|Control Panel** and then double click on the **Modems** icon and click on **Add**.
- Select **Don't detect my modem; I will select it from a list** and click on **Next**.
- Click on **Have Disk...**
- Click on **Browse...** and select **Software\GPRS\s45modem.inf** on the CD-ROM. Then click on **Open**.
- Select **S45 Modem (GPRS)** and click on **Next**.
- Select the appropriate COM port and click on **Next**.
- Click on **Finish**.
- Click on **Close**.
- You will then be prompted to **configure dial-up networking**. Click on **Yes**.

## RAS setup

Click on **Add**

Note: If you have already used the COM port, remove this beforehand by selecting it and clicking on **Remove**. You can also start the RAS server separately: Select **Control Panel|Network|Services** and then **Remote Access Service**.

- Select **S45 Modem (GPRS)** as the RAS-capable device and click on **OK**.
- Click on **Continue** and **Close**.
- Windows now prompts you to **shut down and restart the system**. Click on **Yes**.

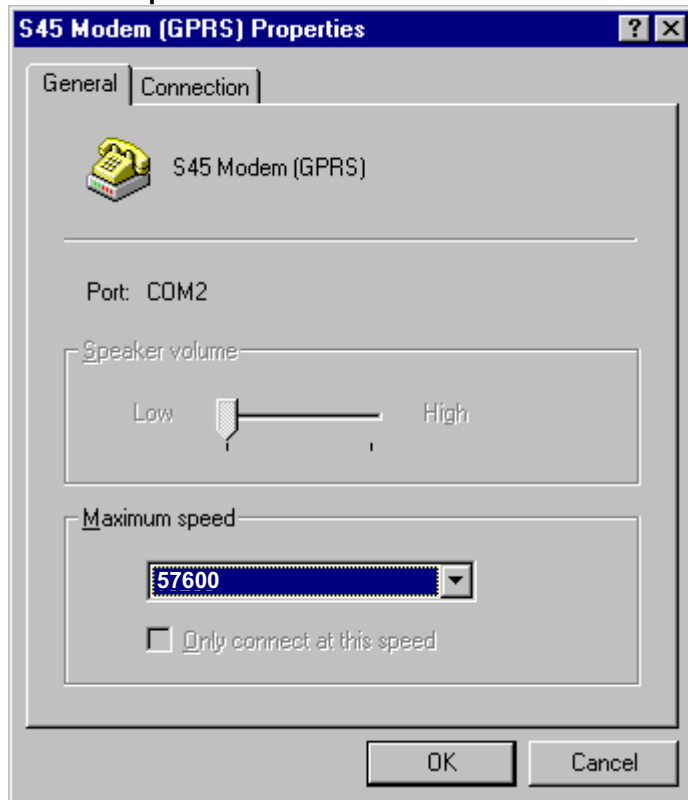
# Installation for Microsoft Windows NT

---

## APN and QoS setup

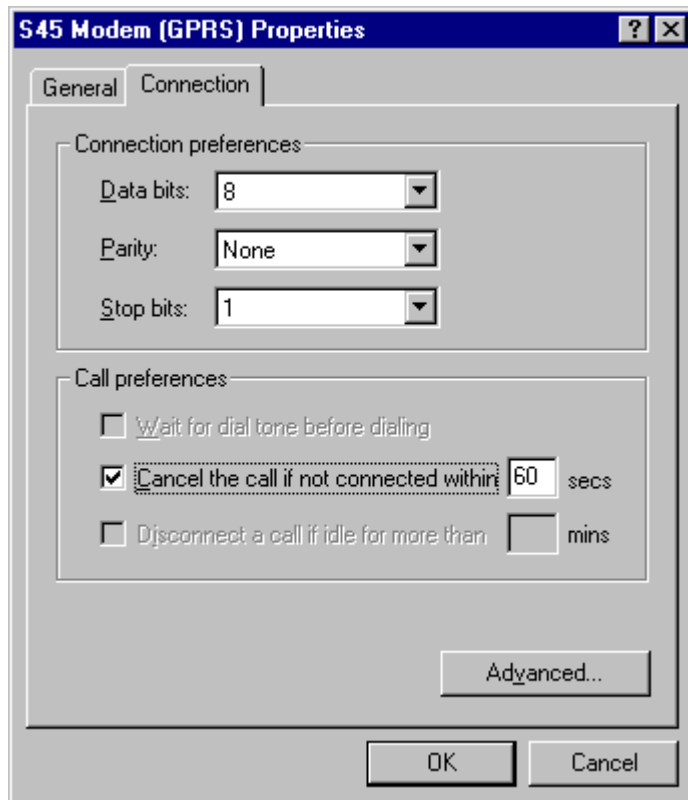
APN and QoS are set via an AT command.

Under **Start|Settings|Control Panel**, click on the **Modems** icon. Select the S45 GPRS modem and click on **Properties**:

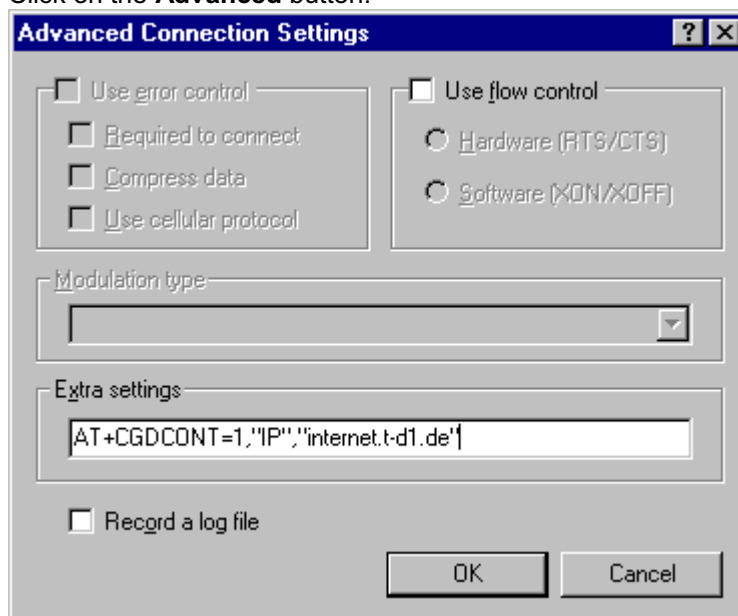


Select the **Connection** tab.

## Installation for Microsoft Windows NT



Click on the **Advanced** button.



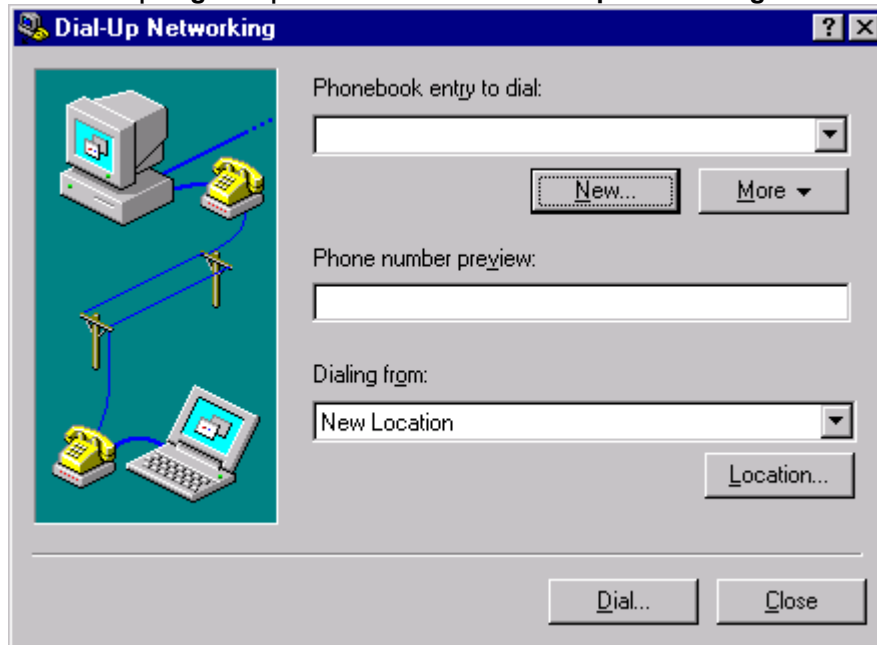
Enter the relevant AT command into the "**Extra settings**" field (here the settings for D1). The settings for your network operator are detailed in the file: [Software\GPRS\NetParameters.Pdf](#)

Click on **OK|OK**.

# Installation for Microsoft Windows NT

## Dial-up networking

From **Start|Programs|Accessories** select **Dial-Up Networking** and click on **New**.

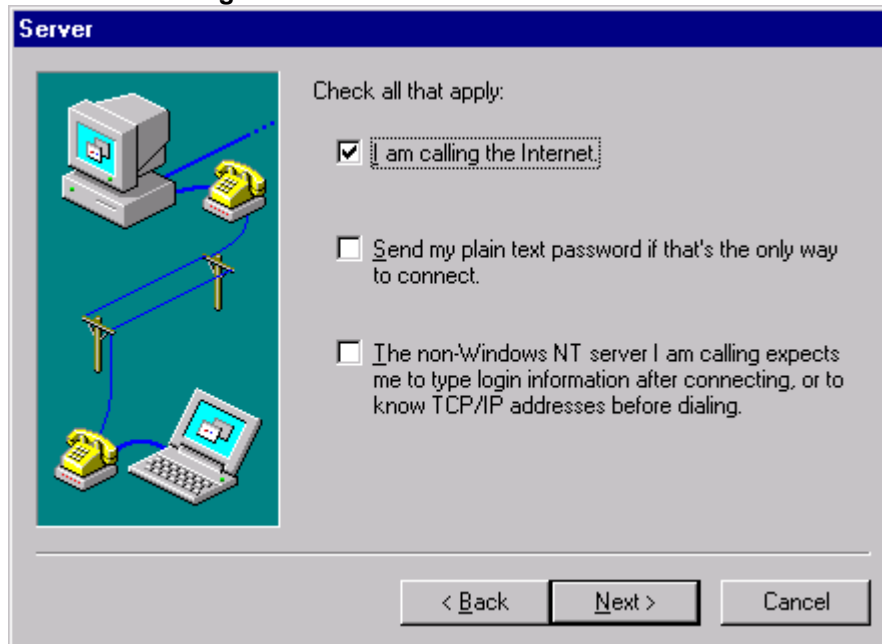


Enter a name for the phonebook entry (here **S45 GPRS**) and click on **Next**.



## Installation for Microsoft Windows NT

Select **I am calling the Internet** and click on **Next**.



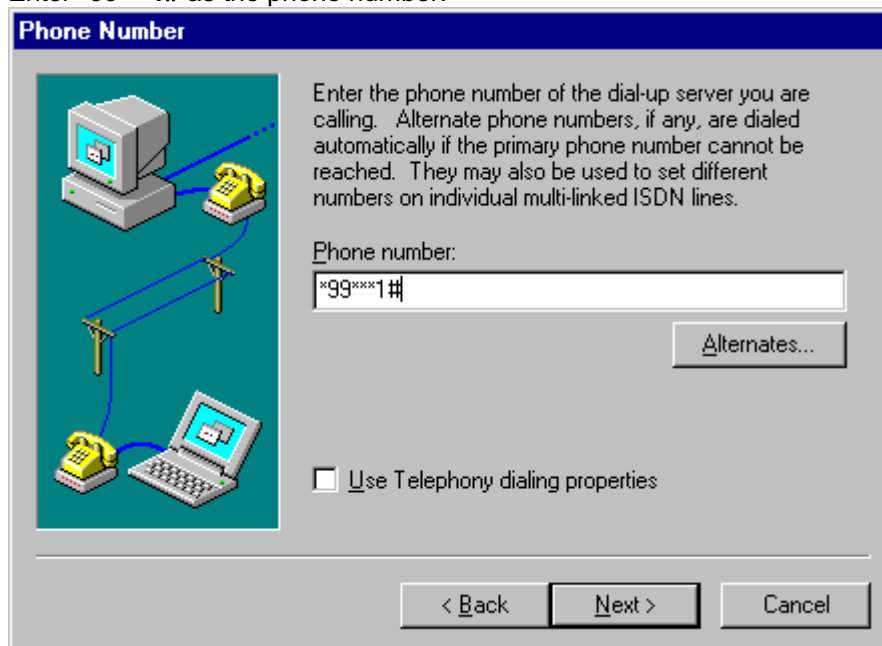
**Server**

Check all that apply:

- I am calling the Internet.
- Send my plain text password if that's the only way to connect.
- The non-Windows NT server I am calling expects me to type login information after connecting, or to know TCP/IP addresses before dialing.

< Back   Next >   Cancel

Enter **\*99\*\*\*1#** as the phone number.



**Phone Number**

Enter the phone number of the dial-up server you are calling. Alternate phone numbers, if any, are dialed automatically if the primary phone number cannot be reached. They may also be used to set different numbers on individual multi-linked ISDN lines.

Phone number:  
\*99\*\*\*1#

Alternates...

Use Telephony dialing properties

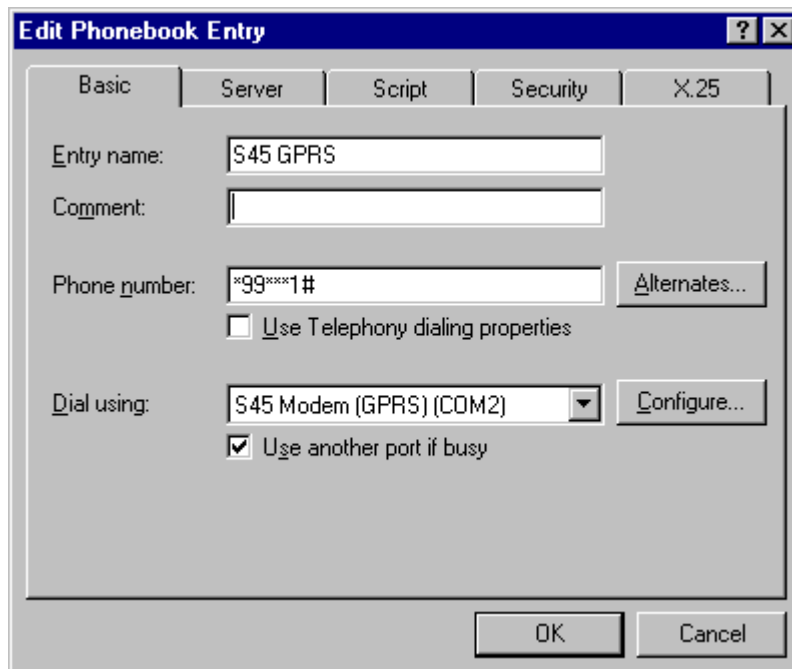
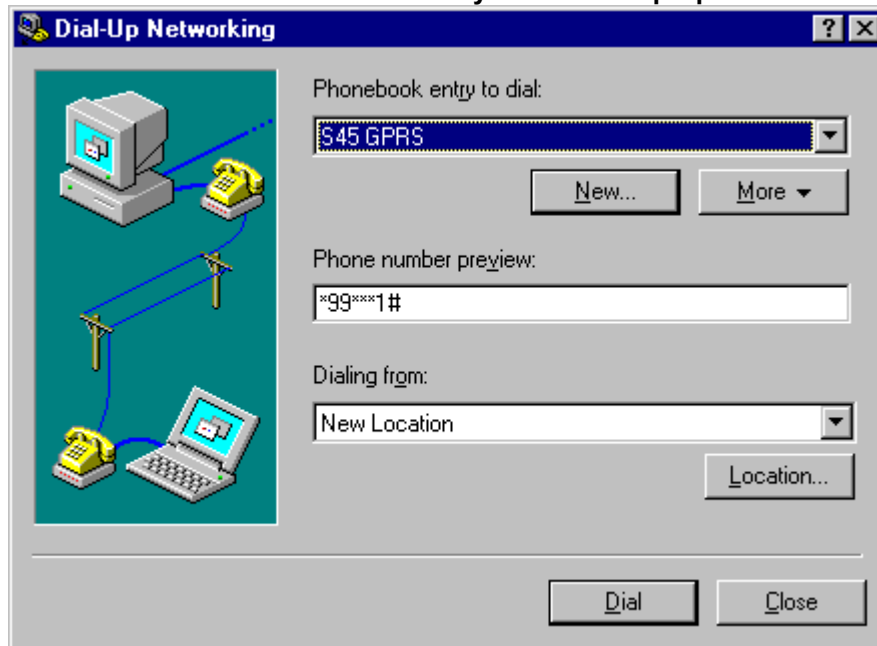
< Back   Next >   Cancel

Click on **Next** and **Finish** to complete the process.



## Installation for Microsoft Windows NT

Now click on **More** and select **Edit entry and modem properties**.



Check whether the correct modem is entered under **Dial using**.  
Click on **Configure....**

## Installation for Microsoft Windows NT

Select the **Server** tab and click on **TCP/IP Settings**.

Enter the network-specific settings (here D1).

The settings for your network operator can be found in the file [Software\GPRS\NetParameters.Pdf](#). If not, please contact your network operator.

**PPP TCP/IP Settings** [?] [X]

Server assigned IP address

Specify an IP address

IP address: 0 . 0 . 0 . 0

Server assigned name server addresses

Specify name server addresses

Primary DNS: 193 . 254 . 160 . 1

Secondary DNS: 0 . 0 . 0 . 0

Primary WINS: 0 . 0 . 0 . 0

Secondary WINS: 0 . 0 . 0 . 0

Use IP header compression

Use default gateway on remote network

OK Cancel

Click on **OK|OK**.

Click on **Dial** and then on **OK**.

**Connect to S45 GPRS** [?] [X]

Enter a user name and password with access to the remote network domain.

User name: [ ]

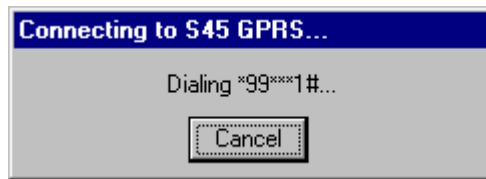
Password: [ ]

Domain: [ ]

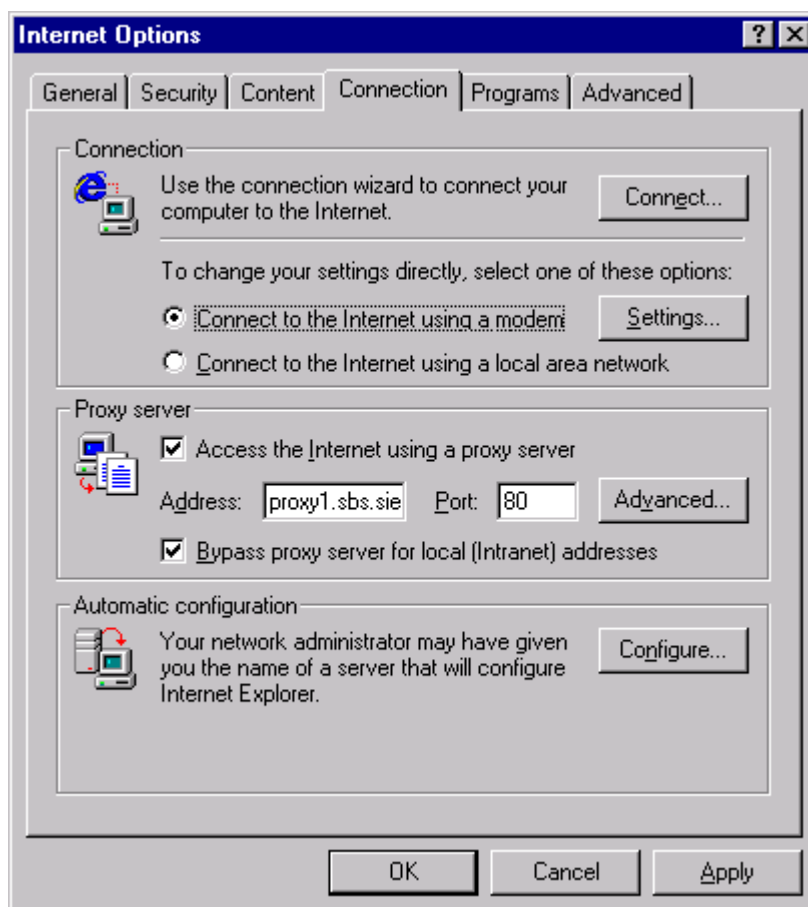
Save password

OK Cancel

## Installation for Microsoft Windows NT

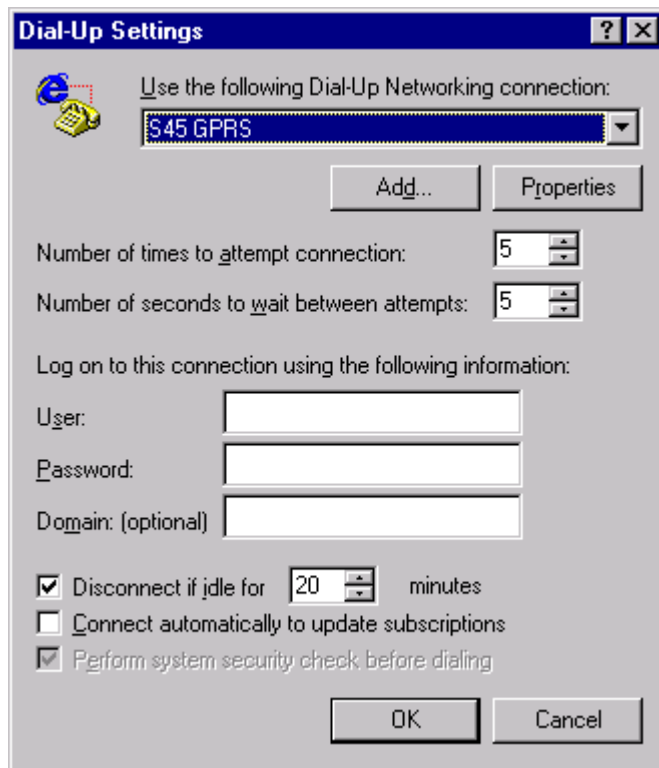


You can now, for example, open your browser to surf the internet. Make sure that the browser is set up to use the current connection. With Microsoft Internet Explorer, these settings are under **View|Internet Options|Connection**. Select **Connect to the Internet using a modem** and click on Settings. Select **S45 GPRS** as the dial-up networking connection.



## Installation for Microsoft Windows NT

---



Additional information on your Siemens mobile is available at [www.my-siemens.com](http://www.my-siemens.com).

# Installation for Microsoft Windows 2000

---

Modem installation .....	22
APN and QoS setup.....	23
Network and dial-up networking.....	26

# Installation for Microsoft Windows 2000

---

The following settings are required to use the S45 to surf the net via GPRS using your mobile:

- 1) Modem installation
- 2) RAS setup
- 3) Dial-up networking

Before entering the settings, connect your S45 to the COM port of your computer. Activate GPRS on your S45 (**Menu|Settings|Data exchange|GPRS**).

## Modem installation

- Insert the CD-ROM into the CD drive on your PC.
- Copy the file **Software\GPRS\s45modem.inf** to your local C drive:
- Under **Start|Settings|Control Panel**, click on the **Phone and Modem Options|Modems** icon and click on **Add**.
- Select **Don't detect my modem; I will select it from a list** and click on **Next**.
- Click on **Have Disk...**
- Click on **Browse** and select **Software\GPRS\s45modem.inf** on the CD-ROM. Then click on **Open**.
- Select **S45 Modem (GPRS)** and click on **Next**.
- Select the appropriate COM port and click on **Next**.
- Click on **Finish**.
- Click on **OK**.

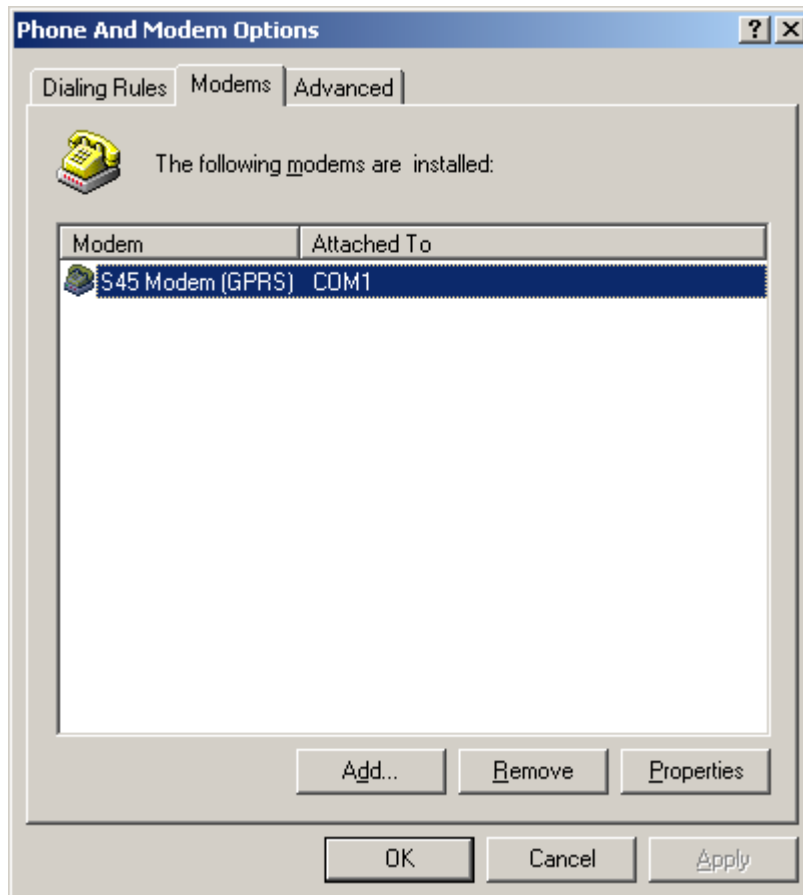
## Installation for Microsoft Windows 2000

---

### APN and QoS setup

APN and QoS are set via an AT command.

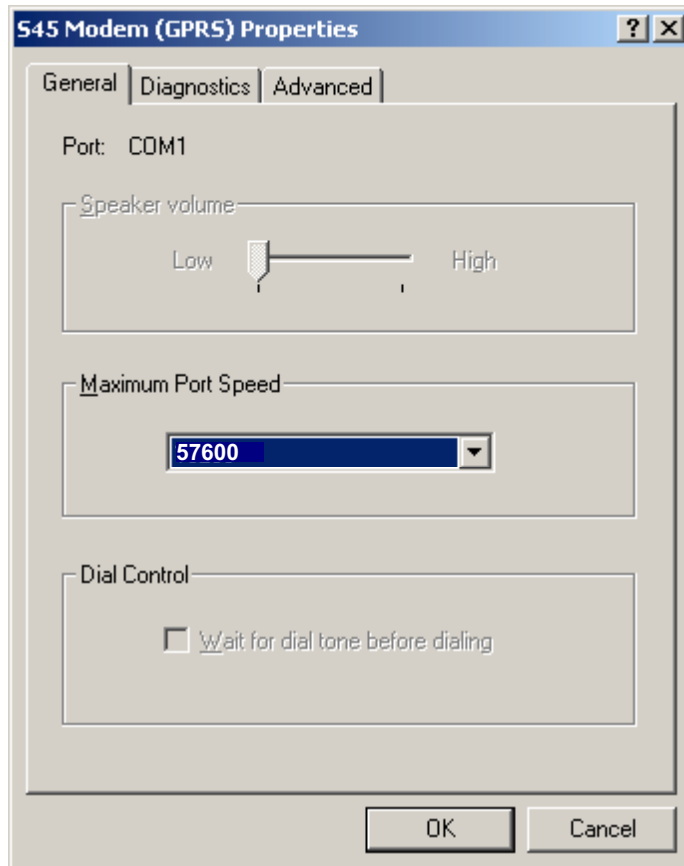
Under **Start|Settings|Control Panel**, click on the **Phone and Modem Options** icon.



Select the S45 GPRS modem and click on **Properties**.

## Installation for Microsoft Windows 2000

---

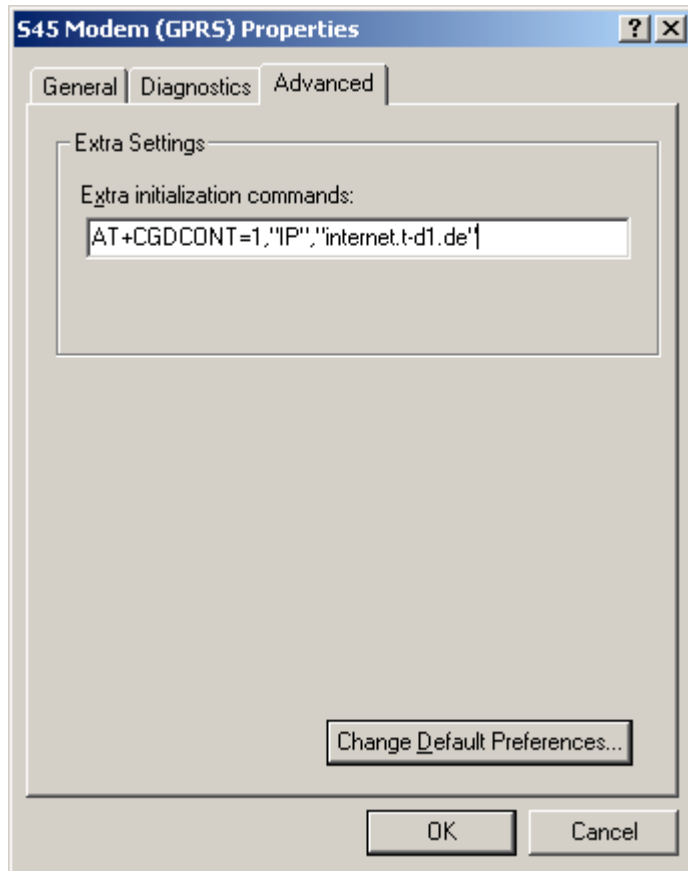


Select the **Advanced** tab.



## Installation for Microsoft Windows 2000

---



## Installation for Microsoft Windows 2000

---

Enter the relevant AT command into the "Extra initialization commands" field (here the settings for D1). The settings for your network operator are detailed in the file: [Software\GPRS\NetParameters.Pdf](#)

Click on **OK**|**OK**.

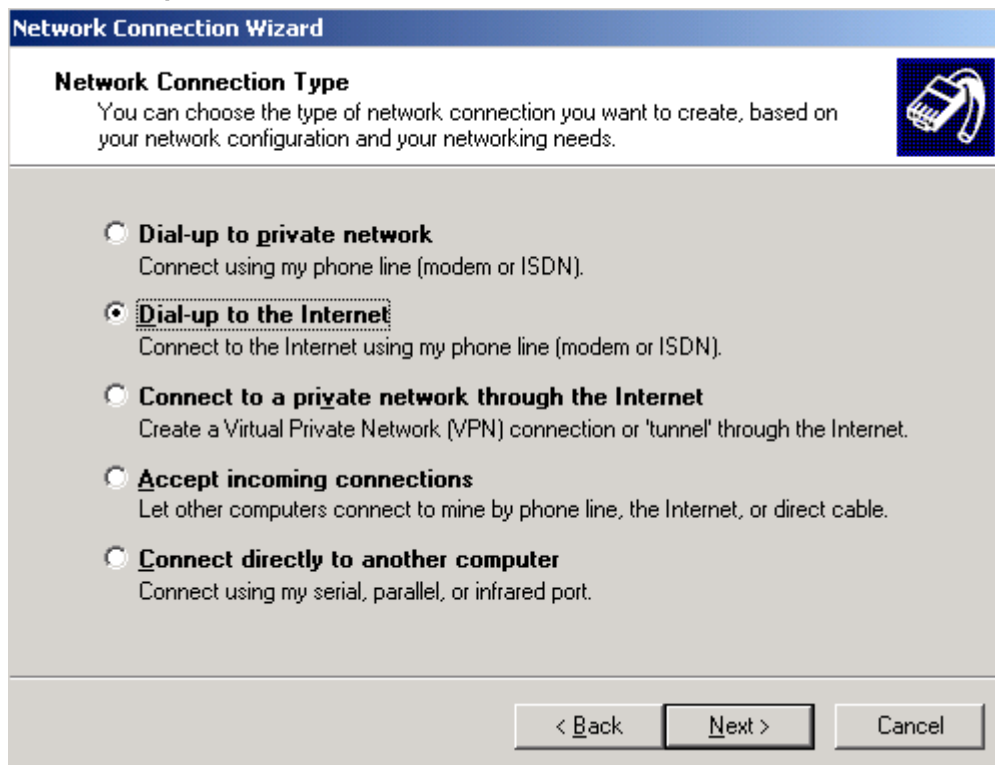
## Network and dial-up networking

From **Start|Programs|Accessories|Communications** select **Network and Dial-Up Connections**. Select **Make New Connection**.

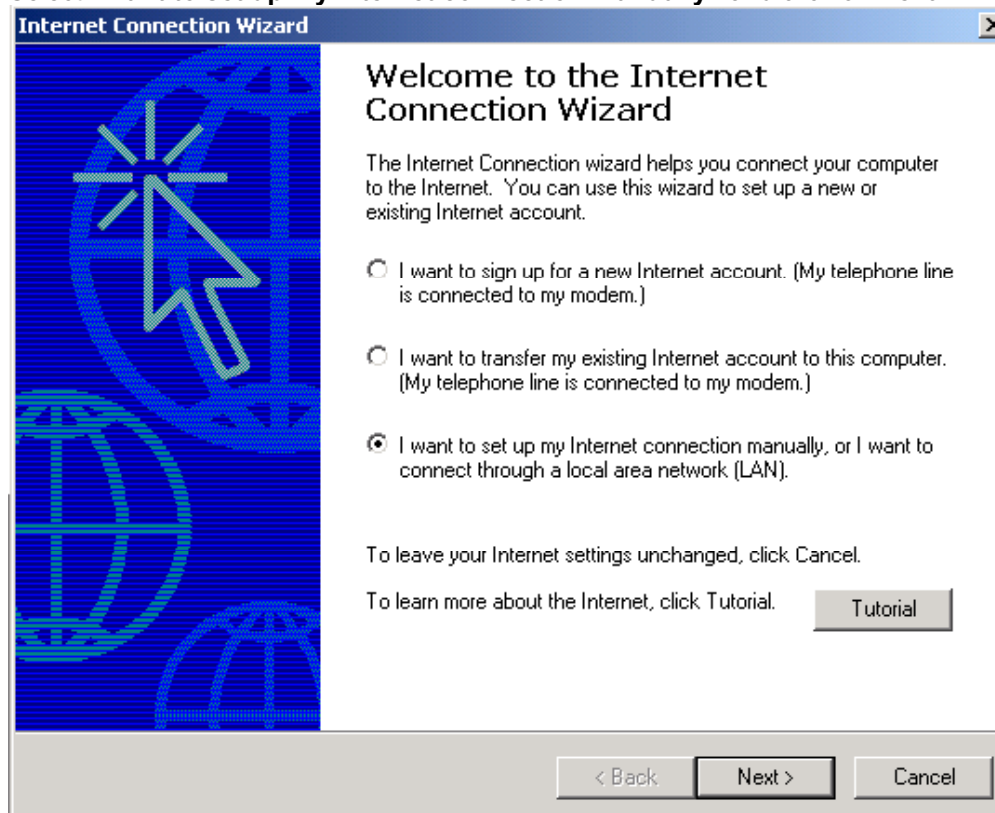


# Installation for Microsoft Windows 2000

Select **Dial-up to the Internet** and click on **Next**.

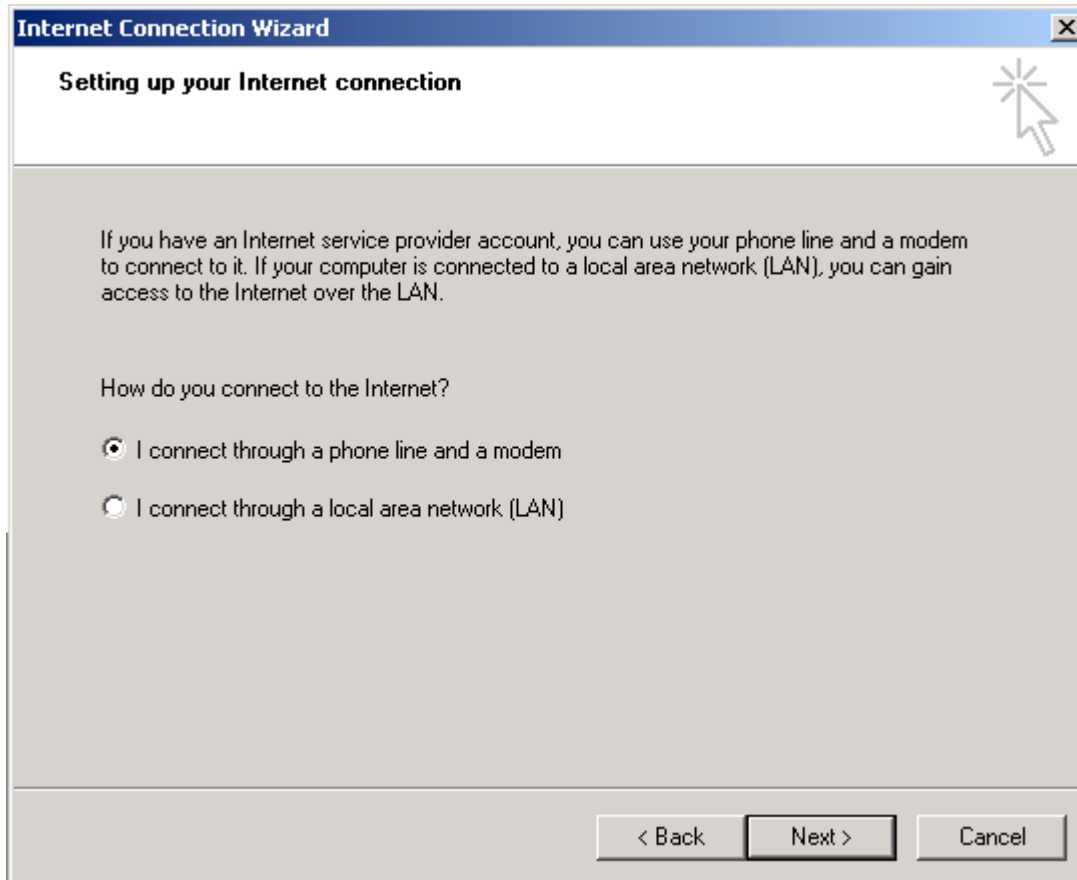


Select **I want to set up my Internet connection manually..** and click on **Next**.

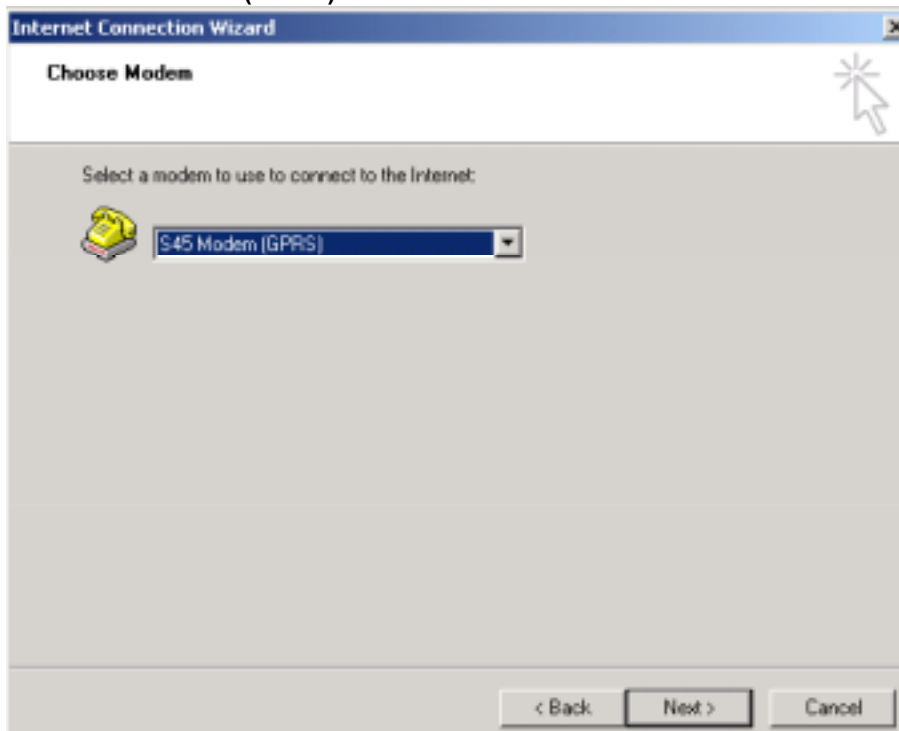


## Installation for Microsoft Windows 2000

Select **I connect through a phone line and a modem** and click on **Next**.



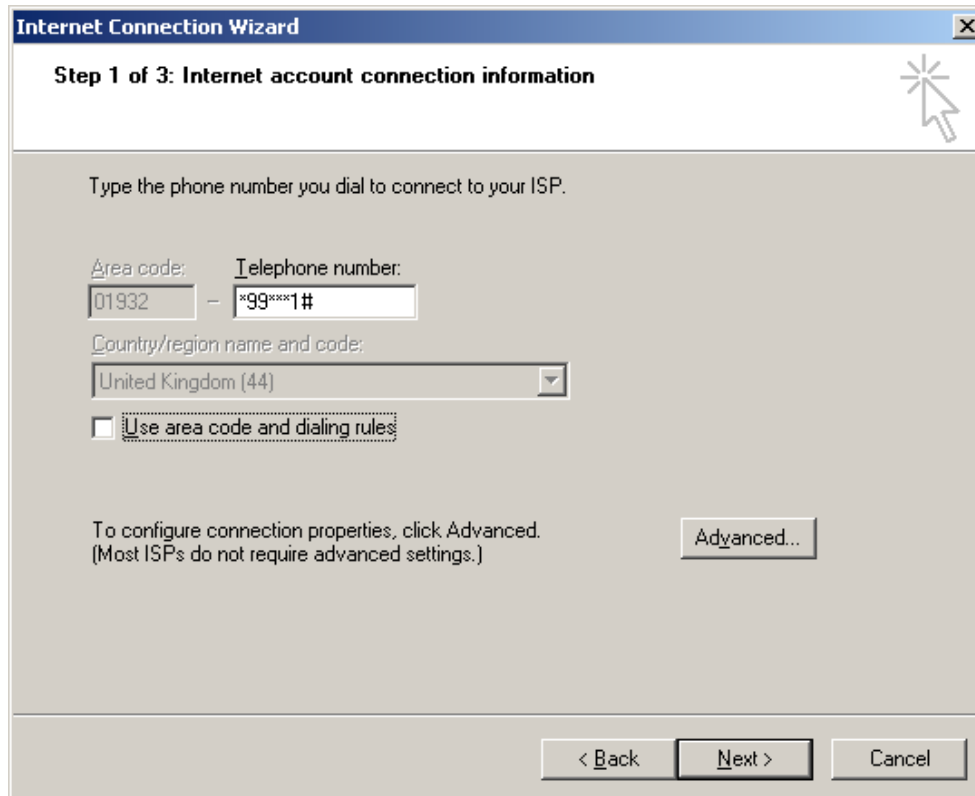
Select **S45 Modem (GPRS)** as the modem and click on **Next**.



## Installation for Microsoft Windows 2000

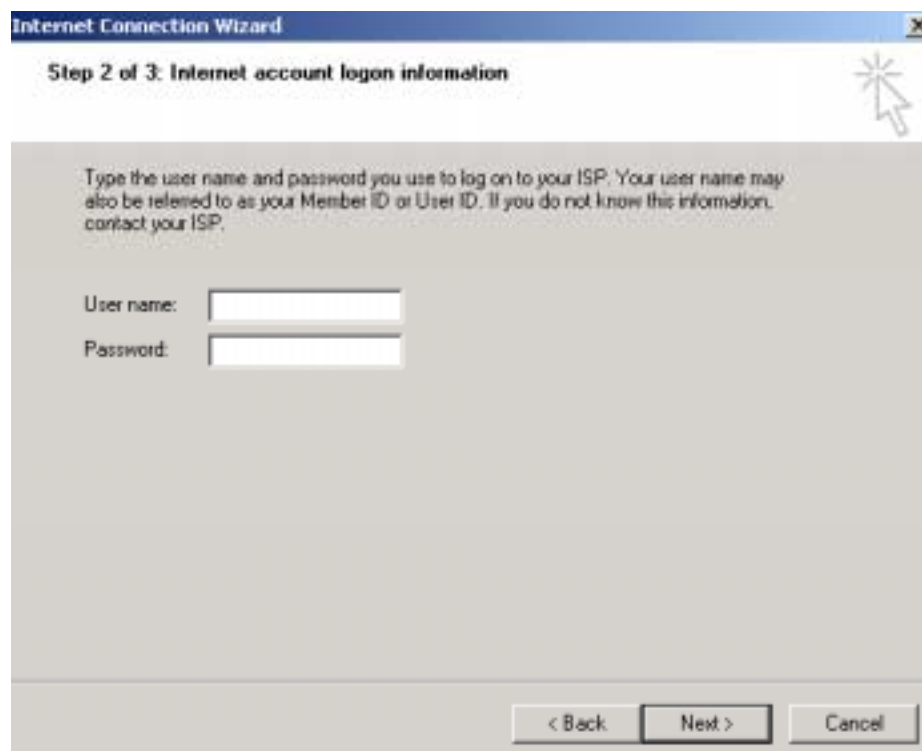
Deselect **Use area code and dialing rules**.

Enter **\*99\*\*\*1#** as the telephone number and click on **Next**.



The screenshot shows the 'Internet Connection Wizard' window at Step 1 of 3: 'Internet account connection information'. The window title bar includes a close button (X). The main content area has a header 'Step 1 of 3: Internet account connection information' and a mouse cursor icon. Below the header, there is a text prompt: 'Type the phone number you dial to connect to your ISP.' The form contains three input fields: 'Area code:' with the value '01932', 'Telephone number:' with the value '\*99\*\*\*1#', and 'Country/region name and code:' with a dropdown menu showing 'United Kingdom (44)'. There is a checkbox labeled 'Use area code and dialing rules' which is currently unchecked. Below the form, there is a text prompt: 'To configure connection properties, click Advanced. (Most ISPs do not require advanced settings.)' and an 'Advanced...' button. At the bottom of the window, there are three buttons: '< Back', 'Next >', and 'Cancel'.

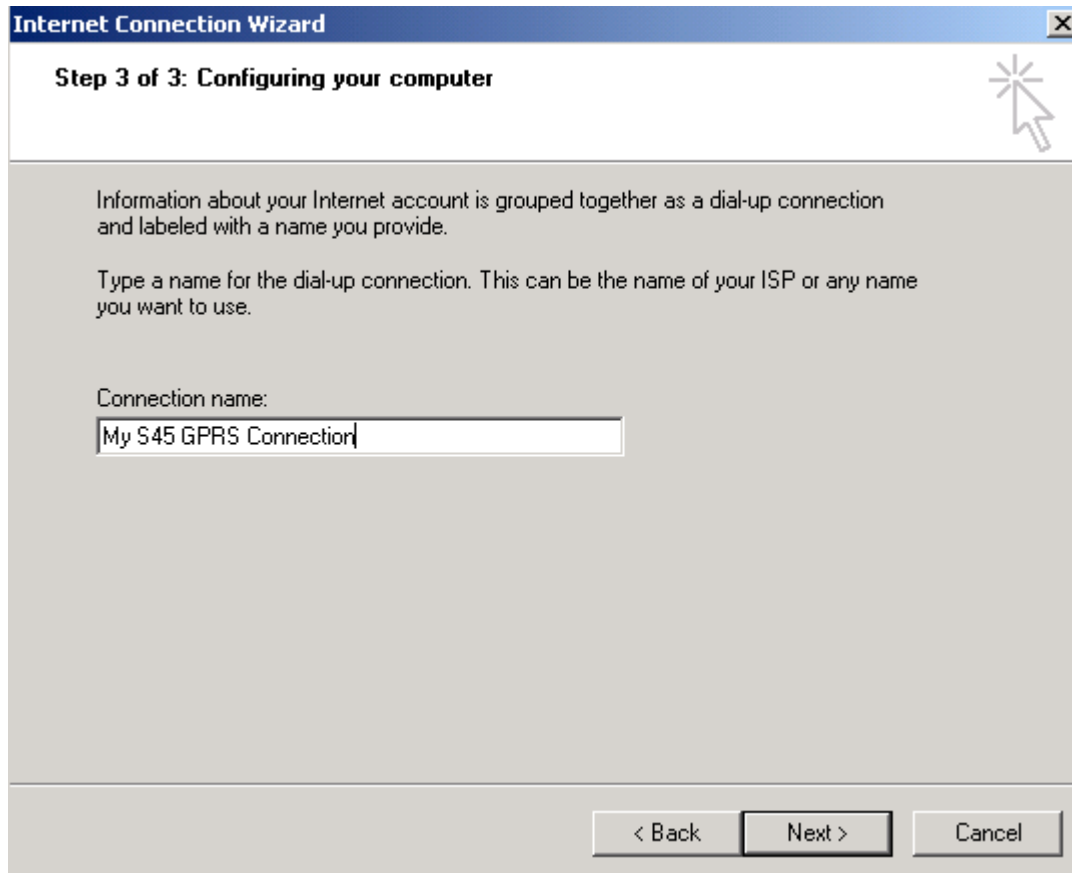
No need to enter **User name** and **Password**, click on **Next**.



The screenshot shows the 'Internet Connection Wizard' window at Step 2 of 3: 'Internet account logon information'. The window title bar includes a close button (X). The main content area has a header 'Step 2 of 3: Internet account logon information' and a mouse cursor icon. Below the header, there is a text prompt: 'Type the user name and password you use to log on to your ISP. Your user name may also be referred to as your Member ID or User ID. If you do not know this information, contact your ISP.' The form contains two input fields: 'User name:' and 'Password:'. At the bottom of the window, there are three buttons: '< Back', 'Next >', and 'Cancel'.

## Installation for Microsoft Windows 2000

Enter the **Connection name** and click on **Next**.



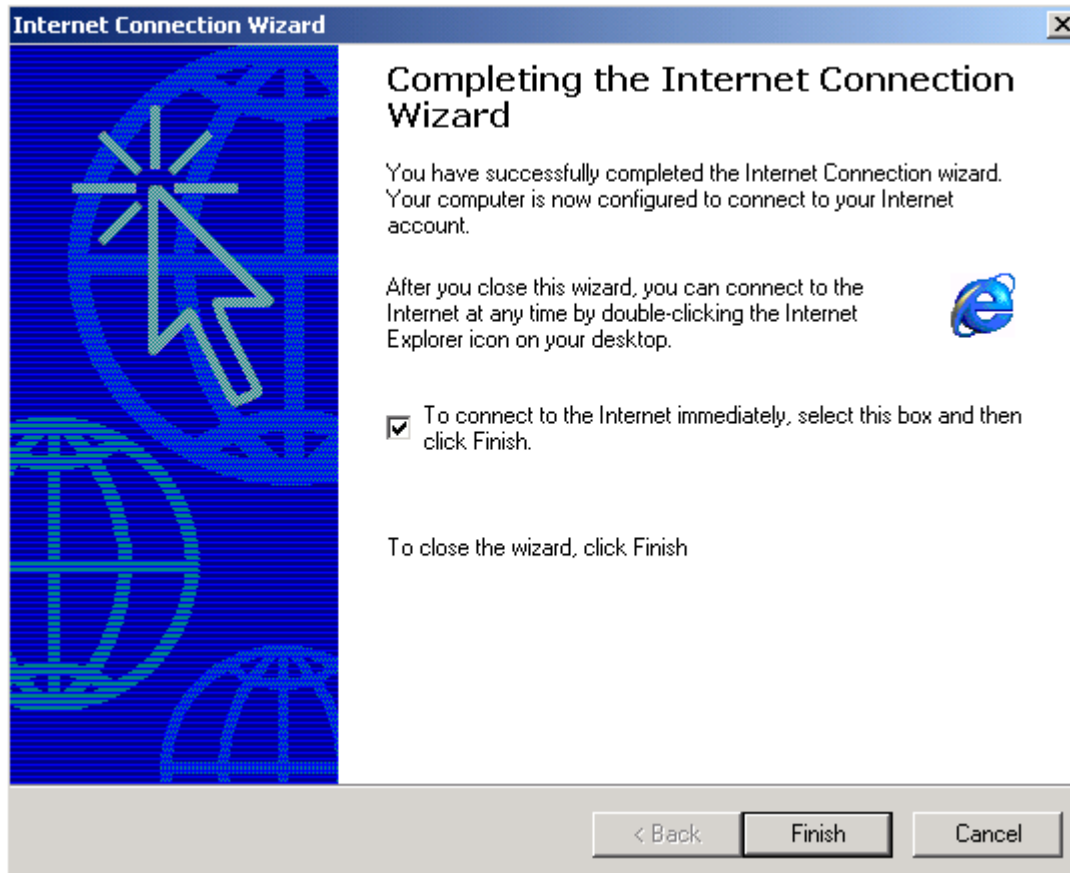
Select **No** as your answer to the question **Do you want to set up an Internet mail account now?**



## Installation for Microsoft Windows 2000

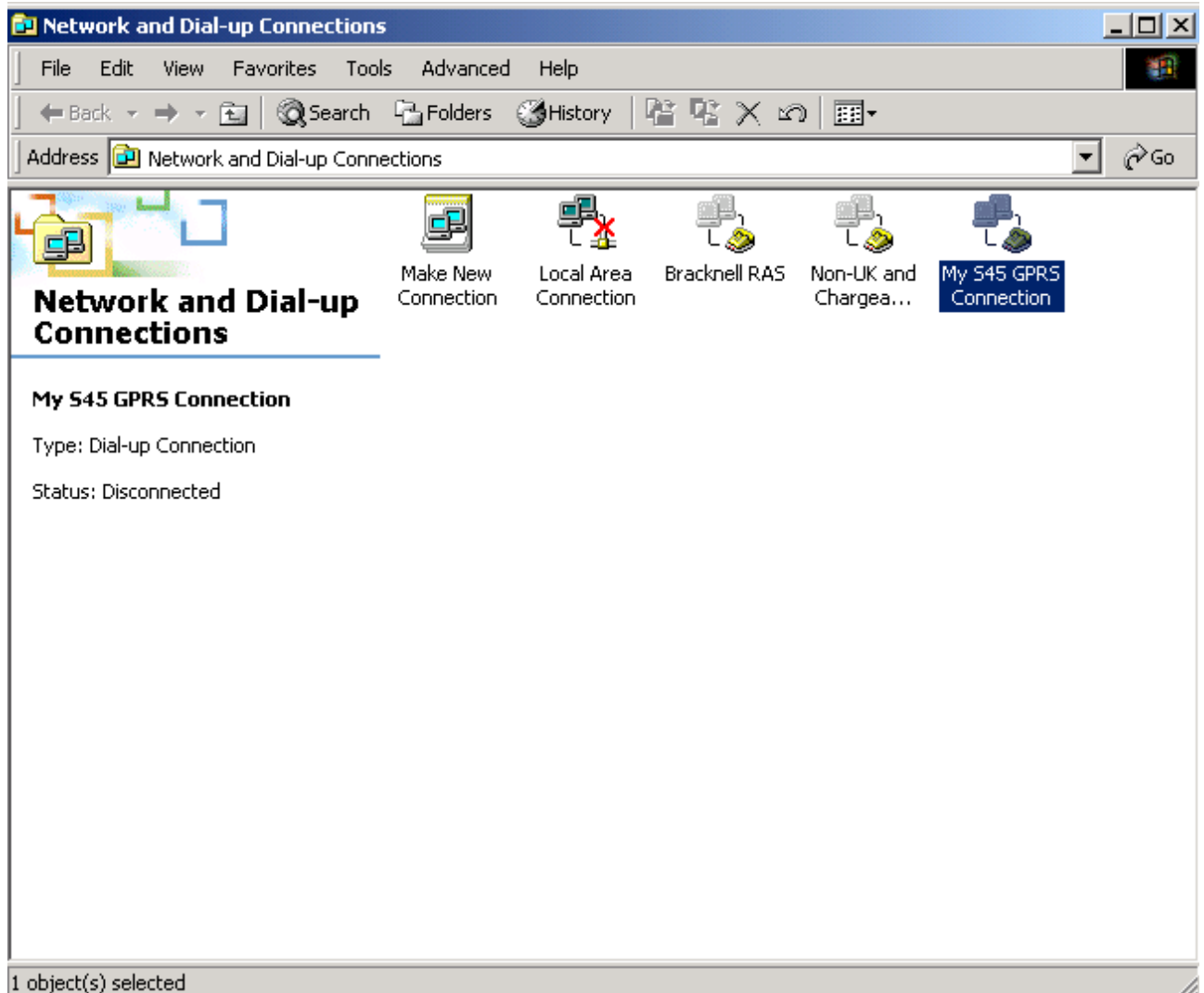
---

Click on **Finish**:



# Installation for Microsoft Windows 2000

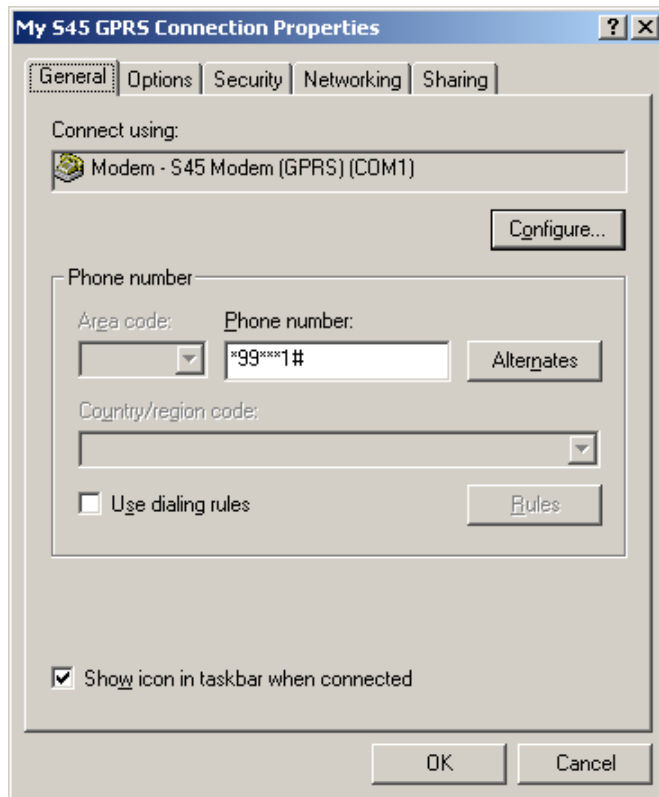
Click on the new connection using the **right-hand mouse button** (here by way of example: **My S45 GPRS Connection**) and choose **Properties**.





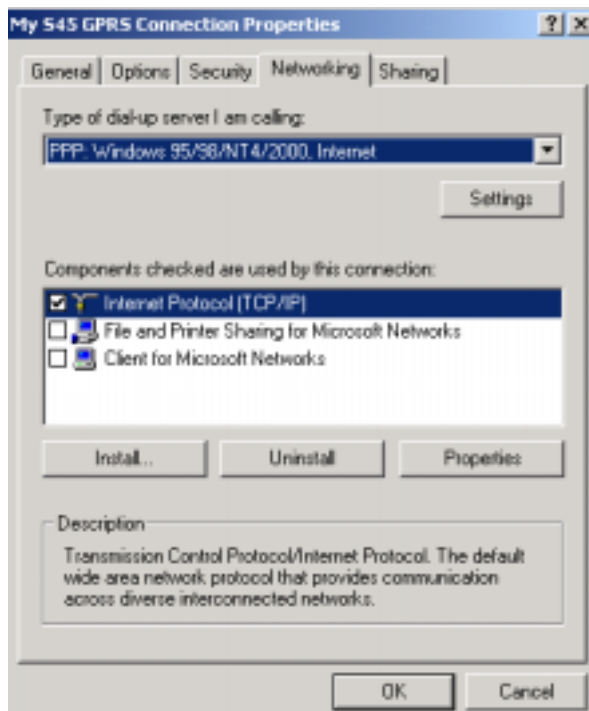
# Installation for Microsoft Windows 2000

Select **S45 Modem** and select the **Networking** tab.



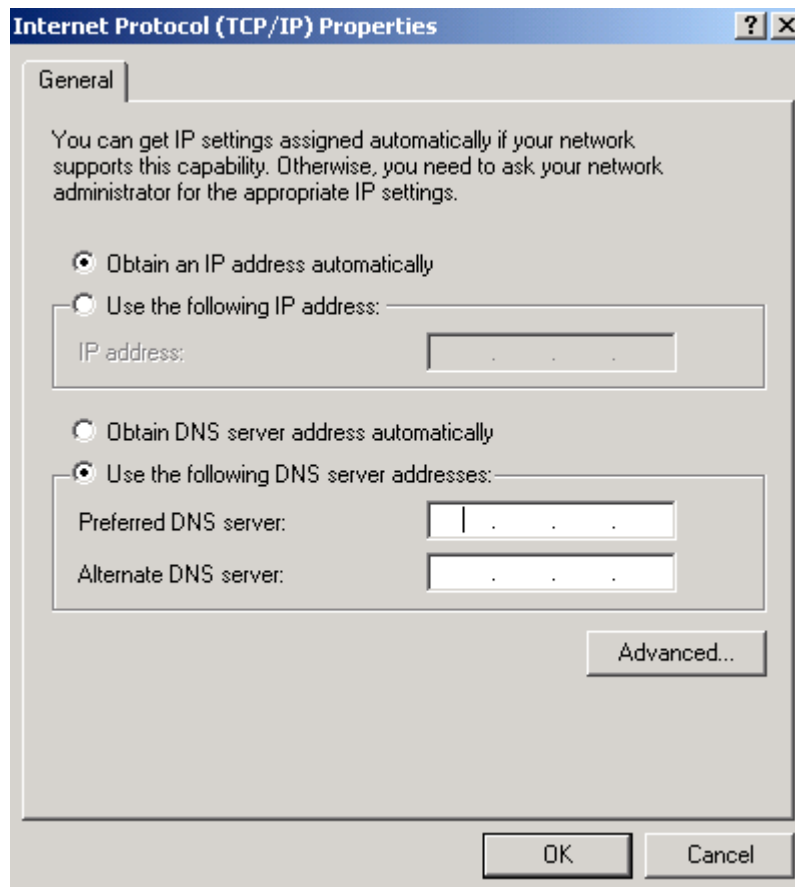
Click on **Configure...**

Select **Internet protocol (TCP/IP)** and click on **Properties**.



## Installation for Microsoft Windows 2000

---



Enter the network-specific settings (e.g. for **Preferred DNS server:** for D1 enter **193.254.160.1** and leave **Alternate DNS server** blank).

The settings for your network operator can be found in the file {file.pdf}. If not, please contact your network operator.

Click on **OK**

## Installation for Microsoft Windows 2000

---

Click on the dial-up connection created (here **My S45 GPRS Connection**) to make the connection.  
Then click on **Dial**:



You can now, for example, open your browser to surf the internet.

Make sure that the browser is set up to use the current connection. With Microsoft Internet Explorer, these settings are under **Tools|Internet Options|Connections**. Select your **S45 Modem** as the dial-up setting.

Additional information on your Siemens mobile is available at <http://www.my-siemens.com>.

Issued by  
Information and Communication mobile  
Haidenauplatz 1  
D-81667 Munich

© Siemens AG 2001  
All rights reserved. Subject to availability.  
Right of modification reserved.

---

Siemens Aktiengesellschaft  
<http://www.siemens.de>